

FEATURES:

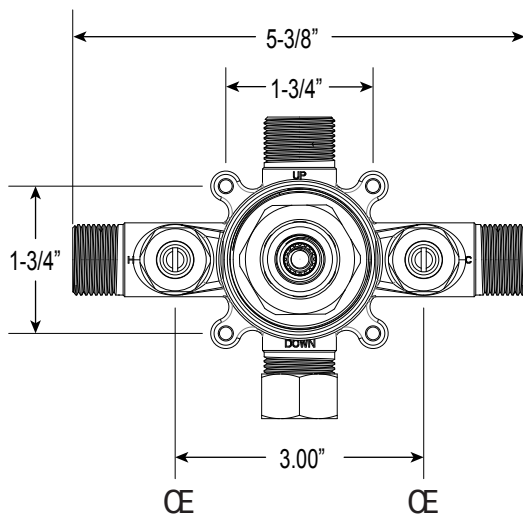
- Solid brass construction
- Valve cartridge: 18.30.893
- Adjustable hot limit safety stop
- Reversible cartridge
- 5.6 GPM @ 45 PSI
- Includes showerhead, arm, and flange
- Certified to meet or exceed the following codes and standards:
ASME A112.18.1/CSAB 125.1-2012

Series 2700
Pressure Balance Shower Set

1.006164
(1.006164T - Trim Only)

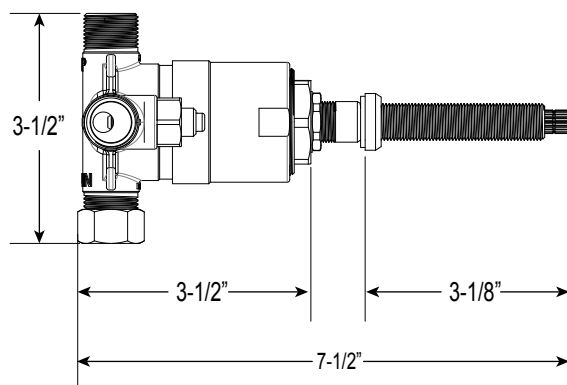
Tremont Handle

Euro Style 20 pt.

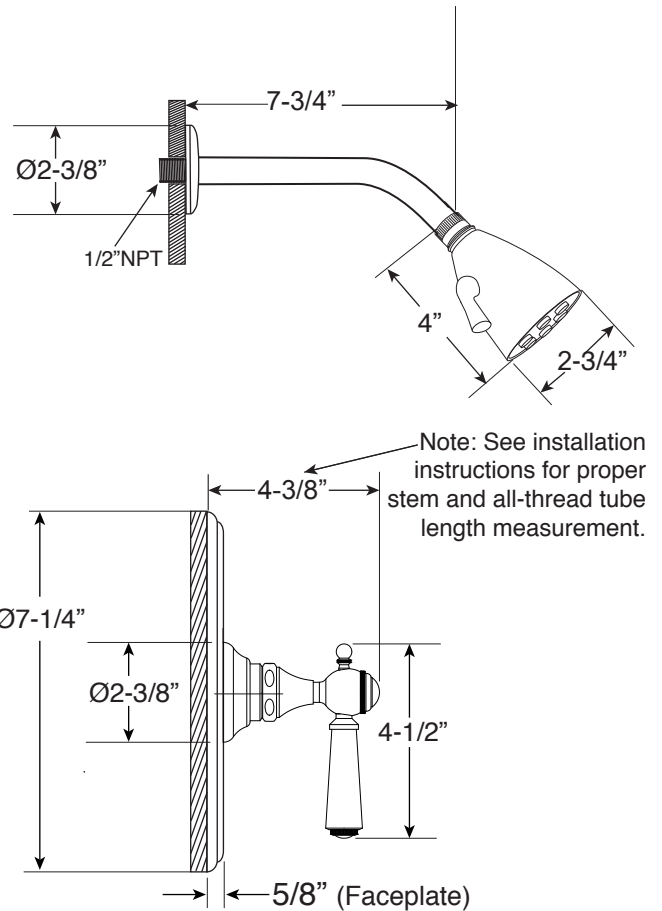


FRONT VIEW

SIDE VIEW



**Note: Stem and
all-thread tube will be
sent with handle trim.*



Current valve in use:
Circa 4/2014 - present
Contact Customer Service
for Older Versions

For additional information on
cartridges or extension kits,
see 'Rough Valving' section
in current catalog.