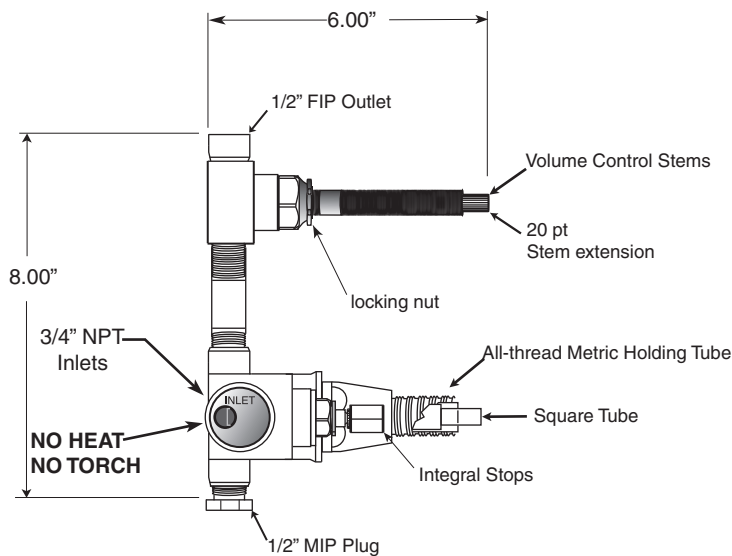


## FEATURES:

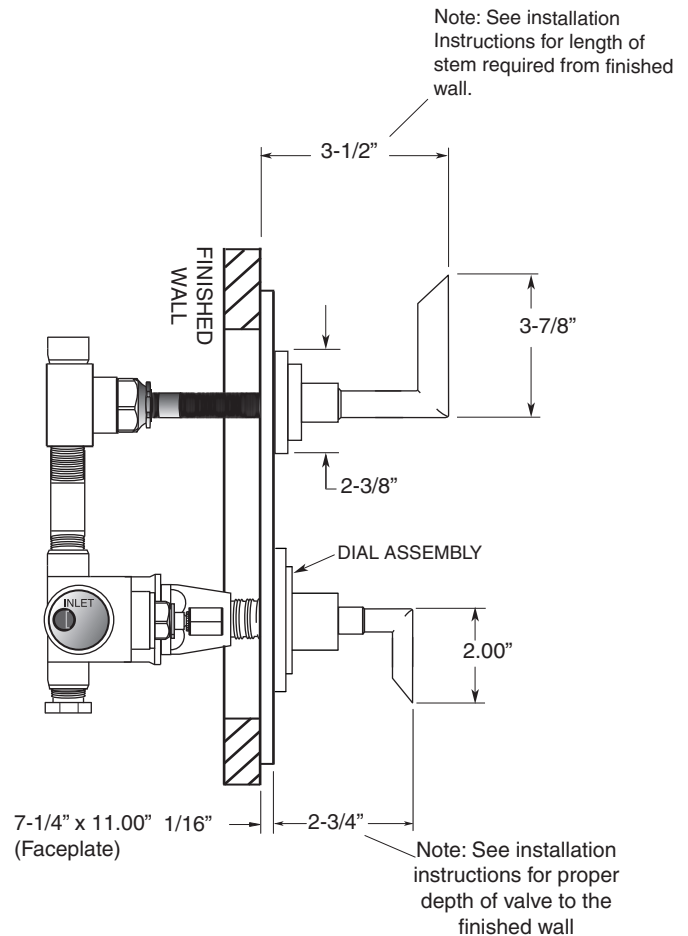
- All brass construction.
- Available in True Stainless Steel only
- Thermostatic valve cartridge: 18.30.082
- Shut-off cartridge: 18.30.036
- Screw driver spring check valve: (2) 18.30.181
- 5.0 GPM @ 45PSI
- Meets: ASME A112.18.1/CSA B125.1-2011

# TechData SPECIFICATIONS *Nouveau*

1/2" Quad Deluxe Thermostatic  
and One Volume Control  
7.0709096V  
True Brushed Stainless Steel  
(7.0709096VT Trim Only)



SIDE VIEW - VALVE ONLY



SIDE VIEW - INSTALLED