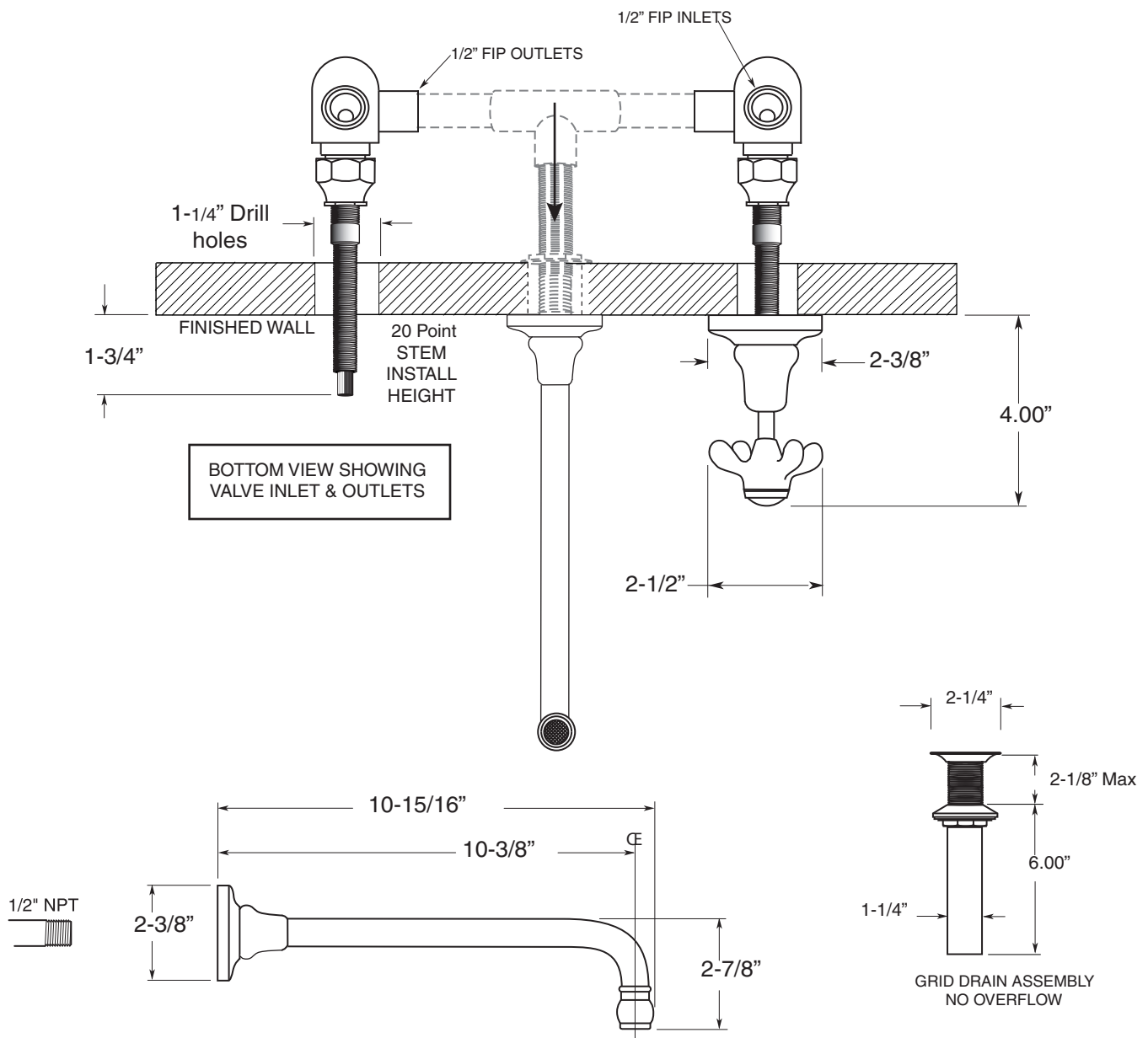


**FEATURES:**

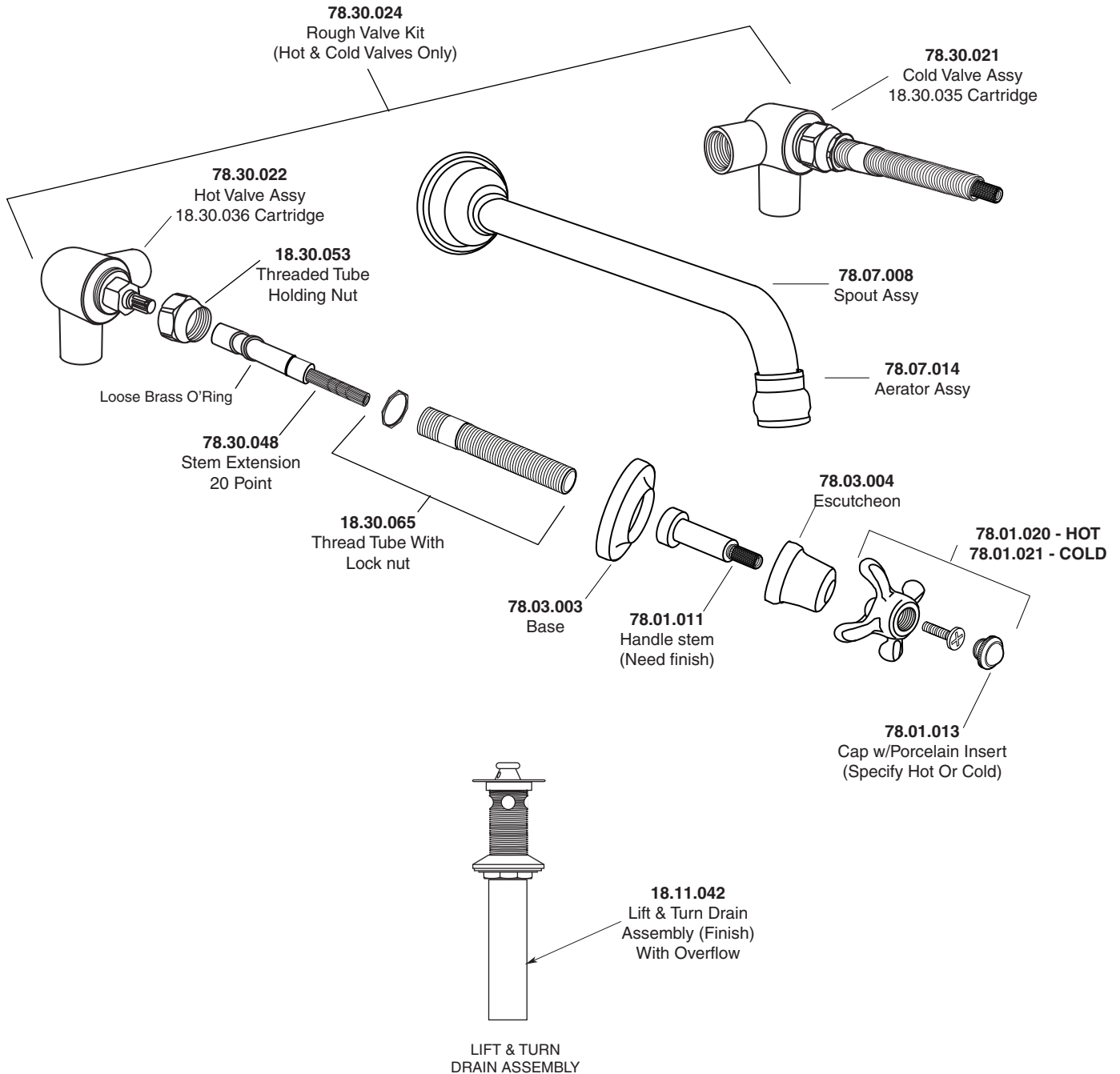
- All brass construction
- Independent corner valves
- Includes grid drain without overflow. P/N 18.11.120
- Standard aerator is limited to 1.5 gpm
- 1/4-turn ceramic disc valve cartridge.
- Available in all finishes. Warranty varies according to finish selection.
- Certified to meet and exceed the following codes and standards:  
ASME A112.18.1/CSA B125.1-2011

Vessel Lavatory Set  
(481) Drop Cross Handle  
7.5548107  
(7.5548107T - Trim only)



Note: Measurements are subject to change or cancellation. No responsibility is assumed for use of superseded or voided pages.

American Faucet & Coatings Corporation



Note: Measurements are subject to change or cancellation. No responsibility is assumed for use of superseded or voided pages.