

FEATURES:

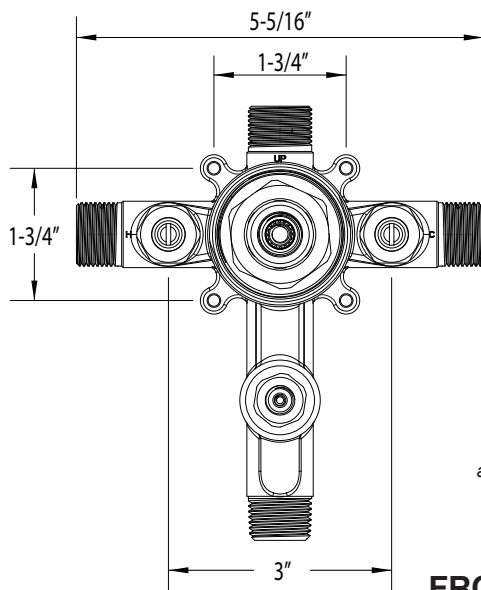
- All brass construction
- Valve cartridge 18.30.865
- Diverter assembly 18.30.873
- Adjustable hot limit safety stop
- Reversible cartridge
- 5.6 GPM @ 45 PSI
- Certified to meet or exceed the following codes and standards:
ASME A112.18.1/CSAB 125.1-2012

Pressure Balance Tub and Shower Set
1.255368

Trim Only: 1.255368T

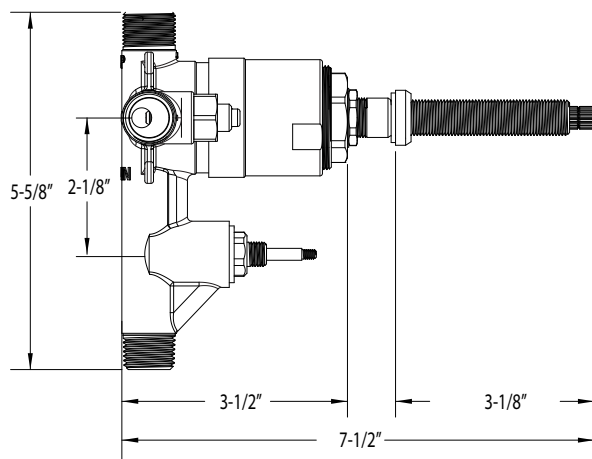
Series 2500/2800

Regent Handle



**Note: Stem and all-thread tube will be sent with handle trim.*

FRONT VIEW



SIDE VIEW

