

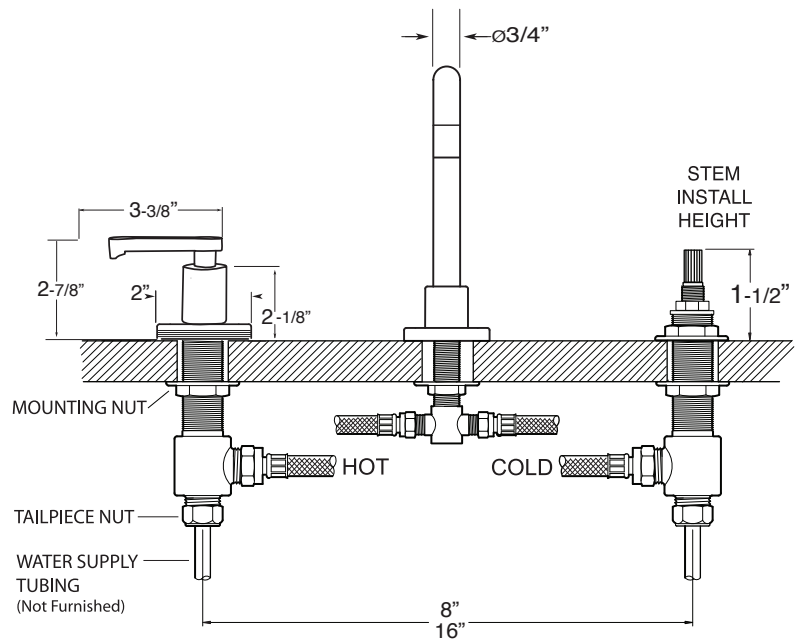
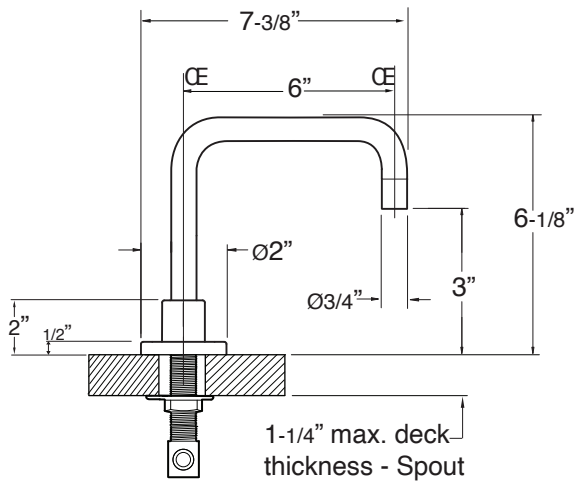
FEATURES:

- All brass construction. Flexible hoses designed to be installed on 8" to 16" centers. Includes soft touch drain assembly, P/N 18.11.052
- Lever style handles with inside screw attachment.
- 20 PT. 1/4-turn ceramic disc valve cartridge.
- Available in all finishes. Warranty varies according to finish selection.
- Standard aerator is limited to 1.2 gpm.
- Certified to meet or exceed the following codes and standards:
ASME A112.18.1/CSAB 125.1-2012

Series 810

1.816808

Widespread Lav Set with Piston Lever Handle



NOTE: Spout and valves install through 1-1/4" diameter holes

