

Features:

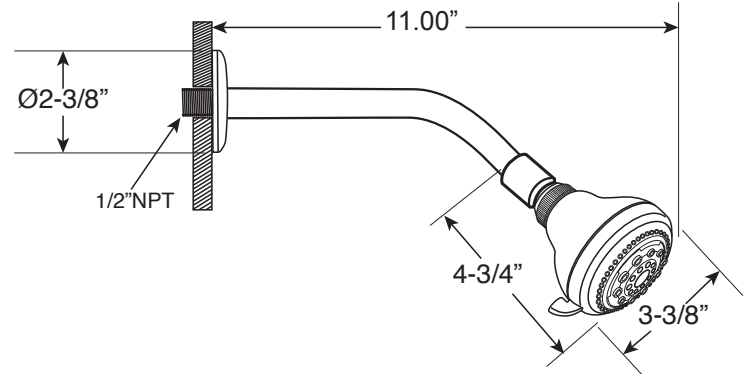
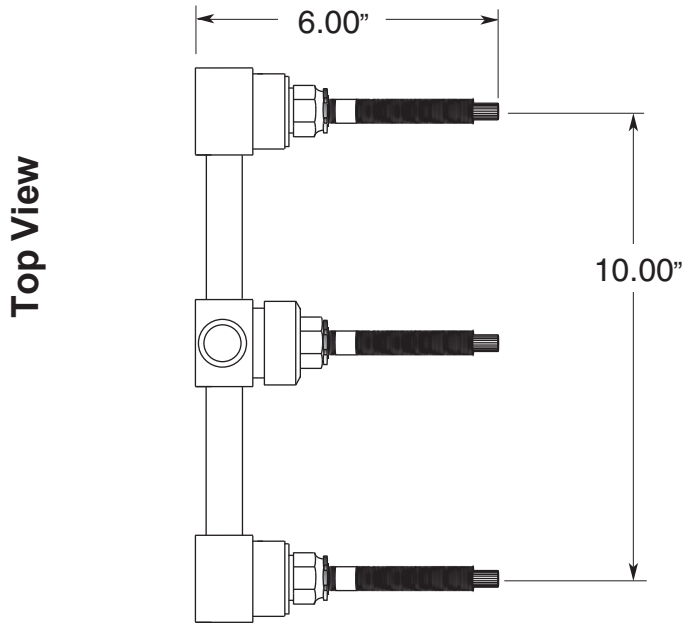
- Forged brass construction
- Built-in diverter valve assembly
- 8" Center to Center available on request
- Replacement cartridge: 18.30.035 - cold / 18.30.036 - hot
18.30.012 - diverter
- Includes 1.8 GPM Showerhead (18.10.051), arm & flange
- 1500 WallTub Spout 18.17.002

3 Valve Tub & Shower

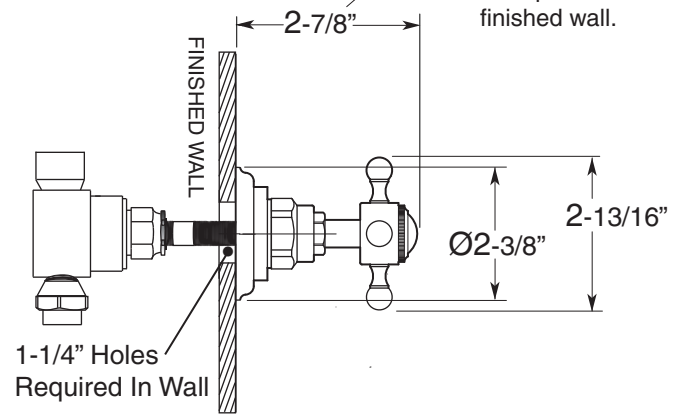
1.157833

Sussex Handle

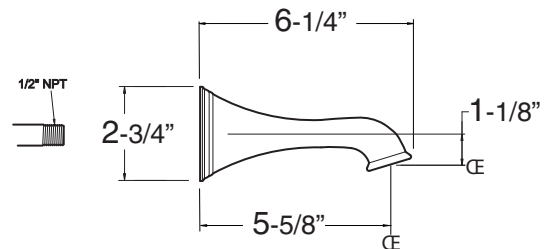
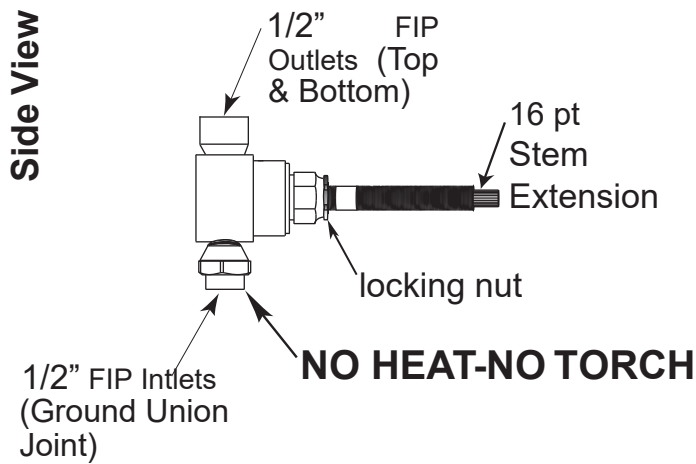
1.157833T Trim Only



Note: See installation instructions for length of stem required from finished wall.



1-1/4" Holes Required In Wall



Note: Measurements are subject to change or cancellation. No responsibility is assumed for use of superseded or voided pages.